

DRINKING
WATER IN
THE ELK
VALLEY

The Fernie Perspective

PRESENTATION HIGHLIGHTS

Past

- Sources
- Water Quality
- Water Storage

Present

- Current Issues

Future

SOURCES FAIRY CREEK

Watershed

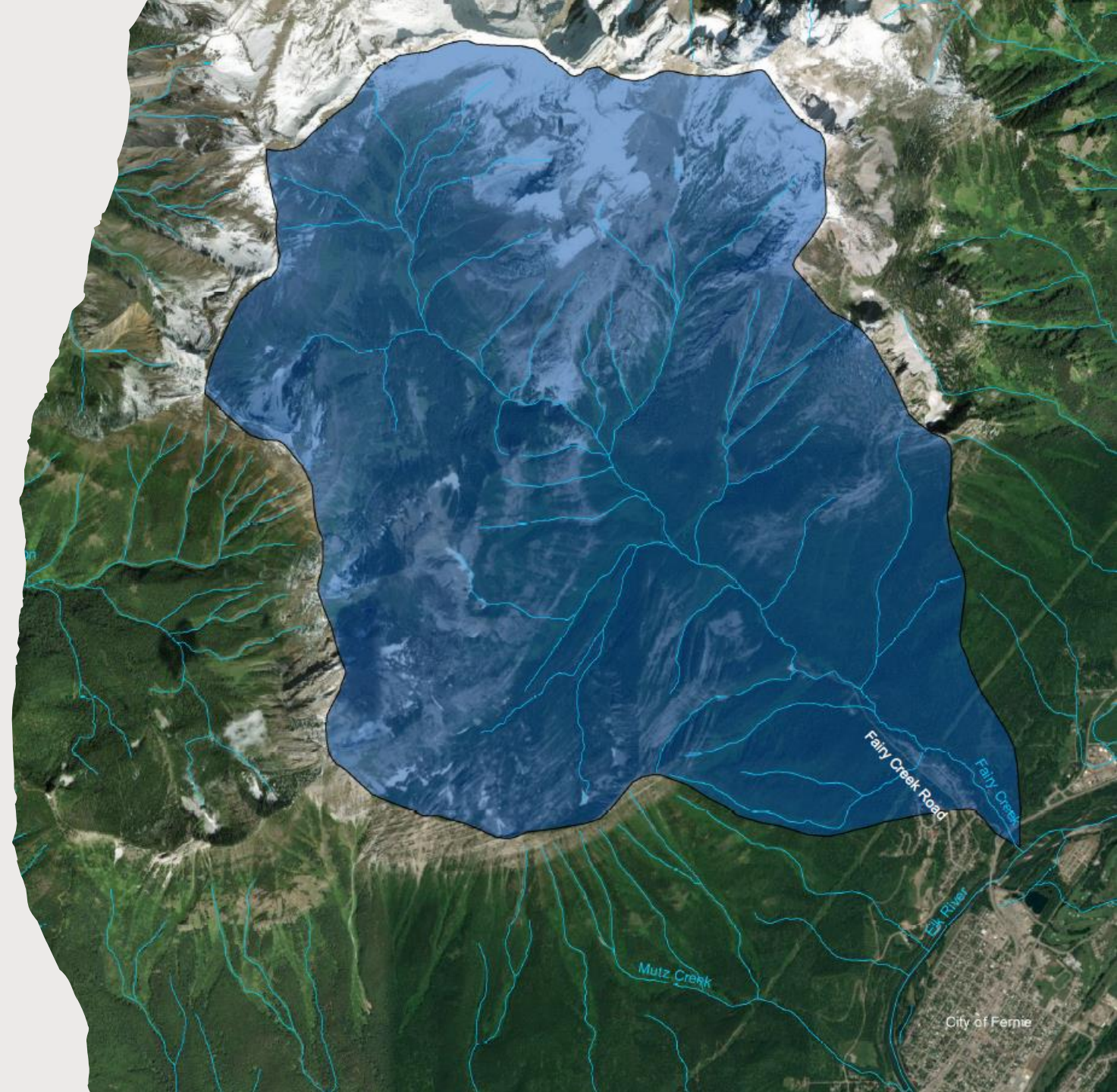
- Size: 27.2 km²
- Location: northwest of Fernie

Creek

- originates underground at Three Sisters
- terminating in the Elk River

Water License

- 1904 – 2,445,777,500 gallons/yr
- 1955 – 20,300,000 gallons/yr
- Total – 355 L/s



SOURCES FAIRY CREEK IMPOUNDMENT NO. 1

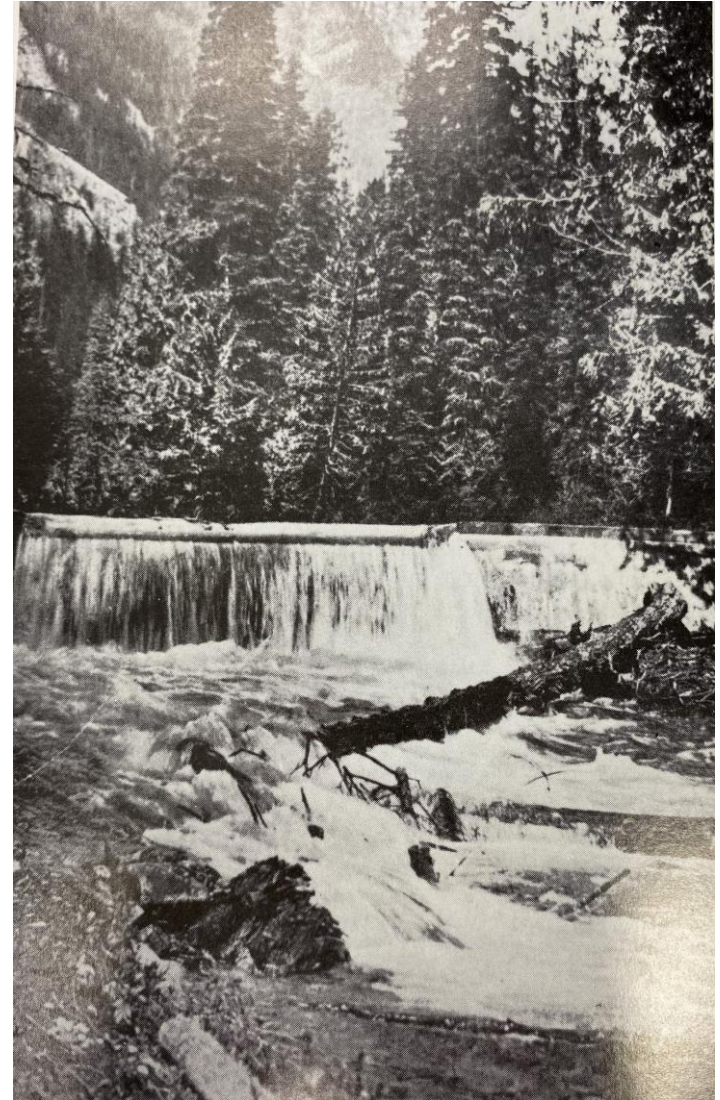
Constructed: early 1900's

Volume: Unknown

Construction Materials: Field Stone

Location: Upstream of the first Fairy Creek Falls

Treatment: None





SOURCES
FAIRY CREEK
IMPOUNDMENT NO. 2

Constructed: 1983

Volume: 1,325,000 Liters

Construction Materials: Concrete

Location: Upstream of the first Fairy
Creek Falls

Treatment: Screening Chamber

WATER QUALITY

Springs

Dam &
Reservoir





WATER QUALITY



WATER STORAGE

Fairy Creek Impoundment 1 (1904-1983)

Ridgemont Reservoir (1923-2010)

Fairy Creek Impoundment 2 (1983-)

North-West (Fairy Creek) Reservoir (2010-)



WATER STORAGE
FAIRY CREEK RESERVOIR

SOURCES

JAMES WHITE WELLS

Oct 1986 – City drilling program to locate a supplementary source of water

Apr 1988 – Production well drilled in Mountview Park

Aug 2016 – Wells & facility construction began

Fall 2018 – Wells commissioned





James White Wells

F.C. Source and Reservoir

LEGEND

WATER - Pipe Material

AC
CI
COPP
DI
GALV
HDPE
MPX
PVC
STL
UNKN

CURRENT ISSUES



Supply & Demand

- Alternative groundwater source

Leakage

CURRENT ISSUES

Supply & Demand

- Alternative groundwater source

Leakage

- Water Smart Action Plan



FUTURE

- Alternative groundwater source
- Treatment upgrades
- Distribution system improvements
- Water bylaws



QUESTIONS?

Joanna Line, P.Eng.

Project Engineer

Joanna.Line@fernie.ca